

www.nobleliftna.com

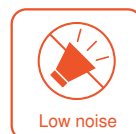
NOBLELIFT
NORTH AMERICA

DIESEL

FD4P50N-70N

5,000 - 7,000 lbs. Capacity

Diesel Pneumatic Forklift



Why choose between price and quality **WHEN YOU CAN HAVE BOTH!**



HIGHLIGHTS

- ▶ On-demand fully hydrostatic power steering (FHPS)
- ▶ 4-Way hydraulics to carriage
- ▶ Side-shift
- ▶ Intelligent buffering
- ▶ Multi-function LED Display: Speed, travel direction, fuel indicator, engine temp, oil pressure, odometer, hour meter, parking brake and more
- ▶ Spacious operator cab
- ▶ Deluxe suspension seat
- ▶ Tilt steering column
- ▶ Operator Presence System (OPS) for safe operation
- ▶ Tilt cylinder boots
- ▶ Safety Blue light
- ▶ LED rear work light, headlights, and strobe
- ▶ Rear grab bar with horn
- ▶ Easy serviceability

FD4P50N-70N

5,000 - 7,000 lbs. Capacity
Diesel Pneumatic Forklift

The FD4P50N-70N Series are highly efficient, durable Diesel Pneumatic forklifts. They are designed to move high volumes and big loads reliably. The mast system, front/rear axles, chassis and overhead guard are engineered for the toughest conditions. Applications can include lumber yards, brick and stone distribution centers, specialized warehouses and heavy-duty manufacturing facilities. These high performance, low maintenance forklifts deliver improved productivity while ensuring operator comfort throughout the entire shift.

SIMPLE. SOLID. SMART.



RELIABILITY AND SAFETY



Heavy-duty steel chassis, axles, mast and overhead guard deliver high strength and stability for high lifting heights and heavy loads.



Radiator's plate fin heat dissipation system keeps engine running reliably, even in the most demanding applications.



Intelligent buffering effectively protects the ground and cargo from damage while forks descend to the ground.



Operator Presence System (OPS) — When operator is not in seat, the hydraulic lift and tilt controls automatically lock out and traveling is disabled.



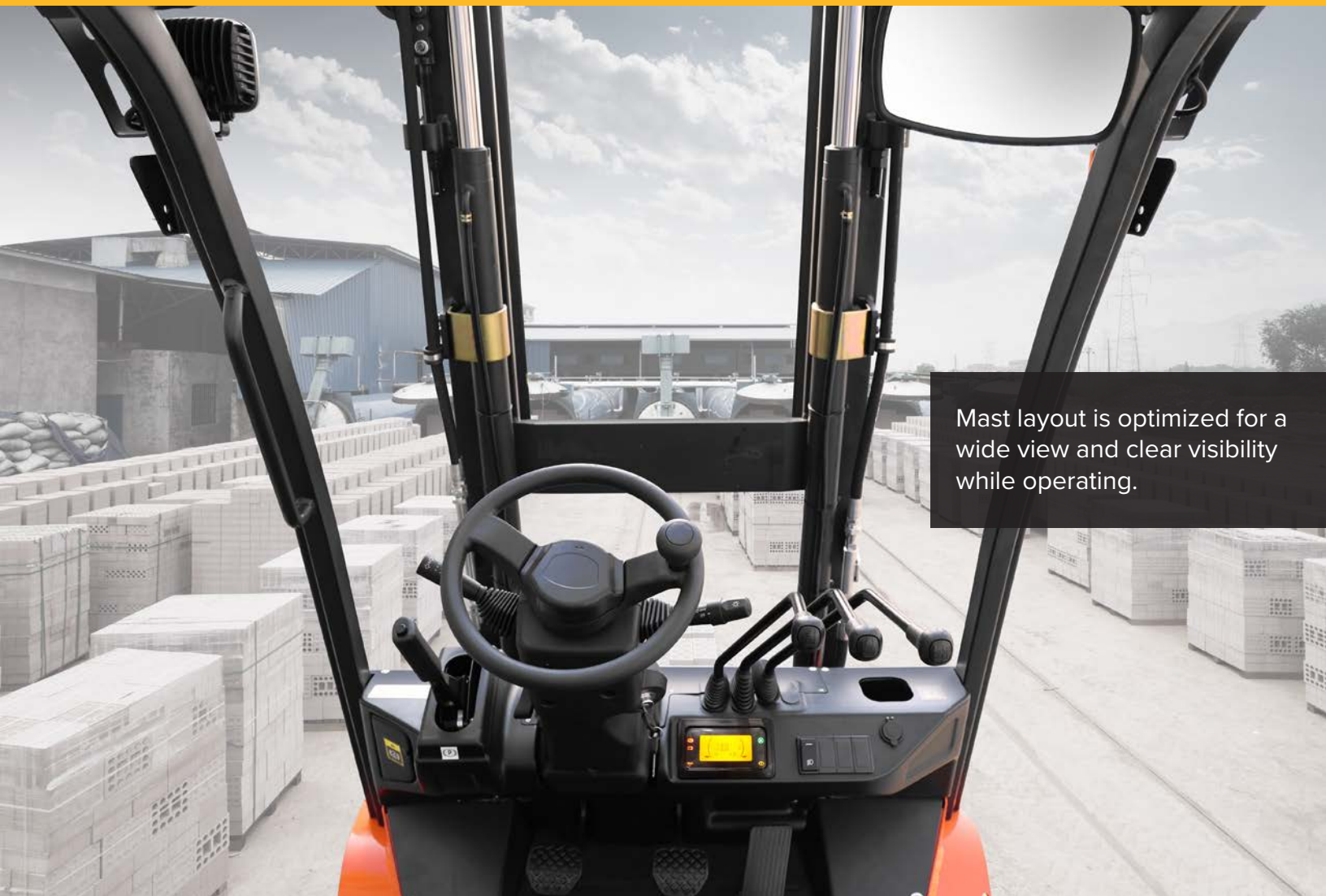
Cast axles increases the bearing load and improves the truck structure, while prolonging vehicle service life.



Durable controller that integrates all electrical components is protected from temperature, water and vibration.



GREAT VISIBILITY. ERGONOMIC. QUIET.



Mast layout is optimized for a wide view and clear visibility while operating.



The large, ergonomic cab and user-friendly design ensures operator comfort throughout the entire work shift. Low entrance height provides operator easy and safe access.

Deluxe suspension, fully adjustable seat reduces vibration to the driver to effectively reduce driver fatigue for all sizes of operators.



On-Demand Fully Hydrostatic Power Steering (FHPS) guarantees smooth steering, preventing over-run and kick-back. Spinner knob allows easier one-handed steering.

GREAT VISIBILITY. ERGONOMIC. QUIET.



The angle of the steering column is easily adjusted with a lever on the left-hand side of the steering column.



Equipped with LED lamps: LED rear work lights, headlights, strobe and safety blue light. Bright light with low power consumption provides excellent visibility.



Optimized pedal position gives operator comfort throughout the entire work shift while reducing operator fatigue.



(2) USB connectors for charging and powering of additional devices during operations.



Angled exit ports direct engine air away from the operator and the cab to help operators stay cool.



Automotive-style levers for headlights and turn signals operate like a car. Easy and intuitive operating controls shorten learning time.

EASY MAINTENANCE



Gain rapid access to engine and other components with an air spring assisted engine cover and integrated hood lock. Opens wide to allow for complete access.

Automobile-style brake fluid system makes it simple to add and check the brake fluid.

Radiator cover fasteners are easily turned by hand to enable quick inspection or servicing.

Air cleaning system with tangential intake and double seal with safety filter is durable, corrosion-free, and vibration-resistant. It provides optimal filter efficiency and lower intake resistance.



Modular frame is designed based on the same chassis as the NOBLELIFT LPG and Electric forklifts. Main components and configurations are the same. Spare parts inventory is minimized to reduce service and maintenance costs.



LS Mtron Engine

56 HP/2,300 rpm

High Power Engine - LS Mtron

High performance, durability and excellent fuel efficiency.

Type: L3

Model: L4CRTV4 (EUV)

Number of cylinders: 4

Bore x Stroke: 88mm x 103mm

Displacement: 2,505 cc

Rated output: 42(56hp)/2300kw/rpm

Rated torque: 208/1600N.m/rpm

Powerful high-output engine provides excellent acceleration, gradeability and fast travel speed.



ENVIRONMENTALLY FRIENDLY



NOBLELIFT's diesel engines meet the tough EPA Tier IV Final and EU Stage V emission regulations for engine exhaust emissions.

NOBLELIFT has used environment friendly materials when possible — Including non-asbestos brake shoes and a new type of sealing gasket. We are committed to pursuing a clean environment.



Mast Table FD4P50N						
Designation	Lift height h3 (in)	Free lift h2 (in)	Closed mast height h1 (in)	Extended mast height h4 (in)	Tilt forward / backward a/b (°)	Capacity table (lb) C=24in without sideshift single pneumatic tires
	FD4P50N	FD4P50N	FD4P50N	FD4P50N	FD4P50N	FD4P50N
Two-stage STD	79	5.1	61.2	117.1	6 / 10	5,000
	98	5.1	73.4	136.8	6 / 10	5,000
	118	5.1	80.9	156.5	6 / 10	5,000
	130	5.1	86.8	168.3	6 / 10	5,000
	138	5.1	90.7	176.1	6 / 10	5,000
	142	5.1	92.7	180.1	6 / 10	5,000
	146	5.1	94.7	184	6 / 10	5,000
	157	5.1	102.6	195.8	6 / 6	4,900
	169	5.1	108.5	207.6	6 / 6	4,600
	177	5.1	112.4	215.5	6 / 6	4,200
	197	5.1	122.2	235.2	6 / 6	3,700
Two-stage FL	79	24.8	61.2	116.9	6 / 10	5,000
	98	34.7	71.1	136.5	6 / 10	5,000
	118	44.5	80.9	156.2	6 / 10	5,000
	130	50.4	86.8	168	6 / 10	5,000
	138	54.4	90.7	175.9	6 / 10	5,000
	142	56.3	92.7	179.8	6 / 10	5,000
	146	58.3	94.7	183.8	6 / 10	5,000
	157	66.2	102.6	195.6	6 / 6	4,800
Three-stage FFL	157	41.6	78	195.9	6 / 6	4,700
	171	46.5	82.9	209.7	6 / 6	4,400
	177	48.5	84.8	215.6	6 / 6	4,000
	189	52.4	88.8	227.4	6 / 6	3,800
	197	58	94.4	235.3	6 / 6	3,400
	217	67.2	104.2	255	3 / 6	2,800
	236	76.4	112.8	274.6	3 / 6	1,900
	256	85.6	122	294.3	3 / 6	1,400

Side shift fork positioner - reduce 440lbs for loading capacity.

Mast Table FD4P60-70N											
Designation	Lift height h3 (in)		Free lift h2 (in)		Closed mast height h1 (in)		Extended mast height h4 (in)		Tilt forward / backward a/b (°)		Capacity table (lb) C=24in without sideshift single pneumatic tires
	FD4P60N	FD4P70N	FD4P60N	FD4P70N	FD4P60N	FD4P70N	FD4P60N	FD4P70N	FD4P60N	FD4P70N	FD4P60N FD4P70N
Two-stage STD	79	79	5.5	5.7	62.0	66.3	121.2	121.2	6 / 10	6 / 10	6,000 7,000
	98	98	5.5	5.7	71.9	76.2	140.9	140.9	6 / 10	6 / 10	6,000 7,000
	118	118	5.5	5.7	81.7	86	160.6	160.6	6 / 10	6 / 10	6,000 7,000
	130	130	5.5	5.7	87.6	91.9	172.4	172.4	6 / 10	6 / 10	6,000 7,000
	138	138	5.5	5.7	91.5	95.9	180.3	180.3	6 / 10	6 / 10	6,000 7,000
	142	142	5.5	5.7	93.5	97.8	184.2	184.2	6 / 10	6 / 10	6,000 7,000
	146	146	5.5	5.7	95.5	99.8	188.1	188.1	6 / 10	6 / 10	6,000 7,000
	157	157	5.5	5.7	103.3	107.7	200	200	6 / 6	6 / 6	5,900 6,600
	169	169	5.5	5.7	109.3	113.6	211.8	211.8	6 / 6	6 / 6	5,700 6,500
	177	177	5.5	5.7	113.2	117.5	219.6	219.6	6 / 6	6 / 6	5,200 6,200
	197	197	5.5	5.7	123.0	127.4	239.3	239.3	6 / 6	6 / 6	4,800 5,300
Two-stage FL	79	79	19.5	19.5	62	62	121.2	121.2	6 / 10	6 / 10	6,000 7,000
	98	98	29.4	29.4	71.9	71.9	140.9	140.9	6 / 10	6 / 10	6,000 7,000
	118	118	39.2	39.2	81.7	81.7	160.6	160.6	6 / 10	6 / 10	6,000 7,000
	130	130	45.1	45.1	87.6	87.6	172.4	172.4	6 / 10	6 / 10	6,000 7,000
	138	138	49.1	49.1	91.5	91.5	180.3	180.3	6 / 10	6 / 10	6,000 7,000
	142	142	51	51	93.5	93.5	184.2	184.2	6 / 10	6 / 10	6,000 7,000
	146	146	53	53	95.5	95.5	188.1	188.1	6 / 10	6 / 10	6,000 6,900
	157	157	60.9	60.9	103.3	103.3	200	200	6 / 6	6 / 10	5,900 6,600
Three-stage FFL	157	157	36.3	36.3	78.7	78.7	200	200	6 / 6	6 / 6	5,800 6,500
	171	171	41.2	41.2	83.7	83.7	213.7	213.7	6 / 6	6 / 6	5,400 6,300
	177	177	43.1	43.1	85.6	85.6	219.6	219.6	6 / 6	6 / 6	5,200 6,000
	189	189	47.1	47.1	89.6	89.6	231.5	231.5	6 / 6	6 / 6	4,800 5,600
	197	197	52.7	52.7	95.2	95.2	239.3	239.3	6 / 6	6 / 6	4,600 5,300
	217	217	61.9	61.9	104.4	104.4	259	259	3 / 6	3 / 6	3,600 4,400
	236	236	71.1	71.1	113.6	113.6	278.7	278.7	3 / 6	3 / 6	2,800 3,000
	256	256	80.3	80.3	122.8	122.8	298.4	298.4	3 / 6	3 / 6	1,600 1,800
	276	-	86.8	-	129.3	-	318.1	-	3 / 6	-	1,200 -

Side shift fork positioner - reduce 440lbs for loading capacity.

Identification					
1.1	Manufacturer		NOBLELIFT		
1.2	Model		FD4P50N	FD4P60N	FD4P70N
1.3	Drive (electric – battery or mains, diesel, petrol, gas, manual)		Diesel		
1.4	Type of operation (hand, pedestrian, standing, seated, order picker)		Seated forklift		
1.5	Load capacity / rated load	Q (lb)	5,000	6,000	7,000
1.6	Load center distance	C (in)	24		
1.8	Load distance, center of drive axle to fork	x (in)	18.8	19	
1.9	Wheel base	y (in)	63	66.9	
Weights					
2.1	Service weight including engine	lb	8,045	9,568	10,470
2.2	Axle loading, laden front / rear	lb	12,125 / 1,322	14,088 / 1,499	15,741 / 1,852
2.3	Axle loading, unladen front / rear	lb	3,395 / 4,542	3,858 / 5,115	4,321 / 5,556
Wheels, Chassis					
3.1	Tires (solid rubber, superelastic, pneumatic, polyurethane)		Solid pneumatic		
3.2	Tire size, front		7.00-12-12PR	28x9-15-14PR	
3.3	Tire size, rear		6.00-9-10PR	6.50-10-10PR	
3.5	Wheels, number front / rear (x = driven wheels)		2x / 2		
3.6	Track width, front	(in)	38	39	
3.7	Track width, rear	(in)	38.6		
Basic Dimensions					
4.1	Mast / fork carriage tilt forward / backward	a/b (°)	6 / 10		
4.2	Lowered mast height	h1 (in)	80.9	81.7	86
4.3	Free lift	h2 (in)	5	5.5	5.7
4.4	Lift height	h3 (in)	118		
4.5	Extended mast height	h4 (in)	156	161	
4.7	Overhead load guard (cab) height	h6 (in)	86		
4.8	Seat height / standing height	h7 (in)	45	46	
4.12	Coupling height	h10 (in)	15		
4.19	Overall length	l1 (in)	146	150	
4.20	Length to face of forks	l2 (in)	103	108	111
4.21	Overall width	b1 (in)	45	48	
4.22	Fork Dimensions	s/e/l (in)	1.6 / 4.7 / 42	1.8 / 4.9 / 42	2.0 / 4.9 / 42
4.24	Fork carriage width	b3 (in)	41	43	
4.31	Ground clearance, under mast, laden	m1 (in)	4.9	5.5	5.5
4.32	Ground clearance, center of wheelbase	m2 (in)	6.7		
4.33	Right angle stack with 40x48 pallet	Ast (in)	145.6	154.5	157
4.34	Right angle stack with 32x48 pallet	Ast (in)	153.6	162.5	165
4.35	Turning radius	Wa (in)	87.8	96.5	99
Performance Data					
5.1	Travel speed, forward / backward	mph	11.2 / 11.2	11.8 / 11.8	
5.2	Lift speed, laden / unladen	fpm	96.6 / 102	84.6 / 90.6	78.7 / 84.6
5.3	Lowering speed, laden / unladen	fpm	<12		
5.5	Max. Drawbar pull, laden / unladen	blf	3,372 / 3,822		
5.7	Max. Gradient performance, laden / unladen	%	20 / 20		
5.10	Service brake		Hydraulic		
Engine					
6.1	Model		S4S-455		
6.2	Rated power / speed	HP/rpm	47.3 / 2,250		
6.3	Generator voltage	V	12		
6.4	Starting motor voltage / output power	V/kw	12 / 2.2		

NOBLELIFT reserves the right to make technical changes and improvements to our products to maintain or enhance the quality, delivery, and efficiency.

A GLOBAL LEADER

NOBLELIFT is a global leader in Lithium Technology. We manufacture more than 200 categories and around 30 series of each product. Our products are designed to meet different application demands and are well accepted by our customers in more than 100 countries and regions in Europe, America, Asia, Africa and more.

Products include: sit-down forklifts, rough terrain forklifts, narrow aisle forklifts, walkie-stackers, order pickers, electric pallet trucks, scissor lifts, tuggers, tow tractors, scrubbers, lift tables, manual pallet jacks and more.



FORKLIFTS



NARROW AISLE



STACKERS



POWERED PALLET TRUCKS



SCISSOR LIFTS



TUGGERS



SCRUBBERS

NOBLELIFT
N O R T H A M E R I C A

2475 S. Wolf Road
Des Plaines, IL 60018
T: 847-595-7100
F: 847-595-7200
sales@nobeliftna.com
www.nobeliftna.com



Website



Video

AUTHORIZED DEALER

